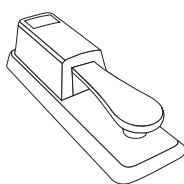
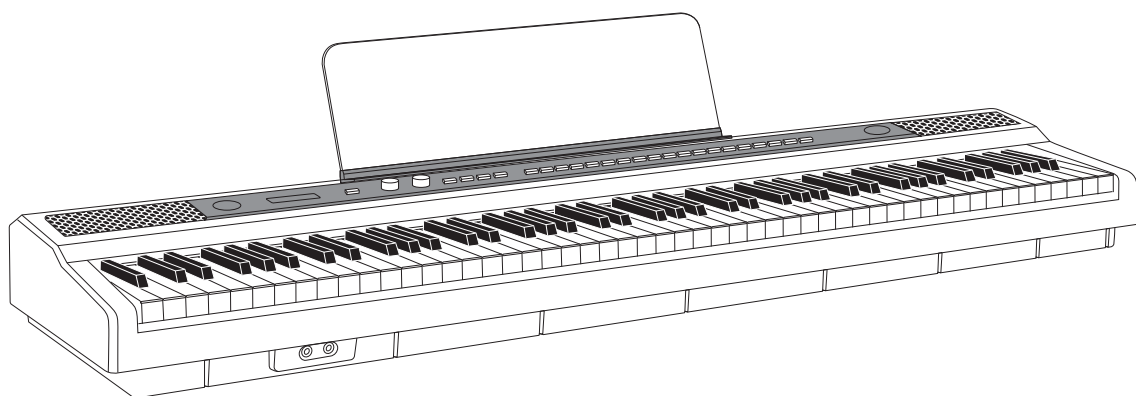


# *CRISTAL*

## **Digital Piano User Manual**

*DPro-200*



This product is subject to change without prior notice



## FUNCTION INTRODUCTION

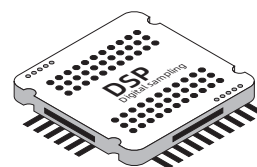
Thank you for choosing our digital piano. This product is elegant and exquisite. It is the perfect presentation of contemporary new electronic technology and acoustics.

- Before using the instrument, you must read this manual carefully.



### DIGITAL SOUND SOURCE BASED ON DSP

Its core uses DSP new digital sound source, digital audio analog sampling, for your performance to bring realistic hearing experience.



### BLUETOOTH MIDI AND BLUETOOTH AUDIO

- Bluetooth connection: Bluetooth MIDI / Bluetooth audio / wechat applet control function
- Tone: 129 tone
- Rhythm: 127 rhythms
- Built in Music Library: 60 demonstration songs
- Volume adjustment: main volume / accompaniment volume
- Accompaniment: comprehensive chord / synchronization / prelude / insertion / epilogue
- Recording: recording / playing
- Adjustment: transpose + - / tempo + - / digital +-
- Metronome: 4 kinds
- Other functions: keyboard drum / dual tone / split / sound effect / touch
- Habit setting: save / call

### REMARK!

---

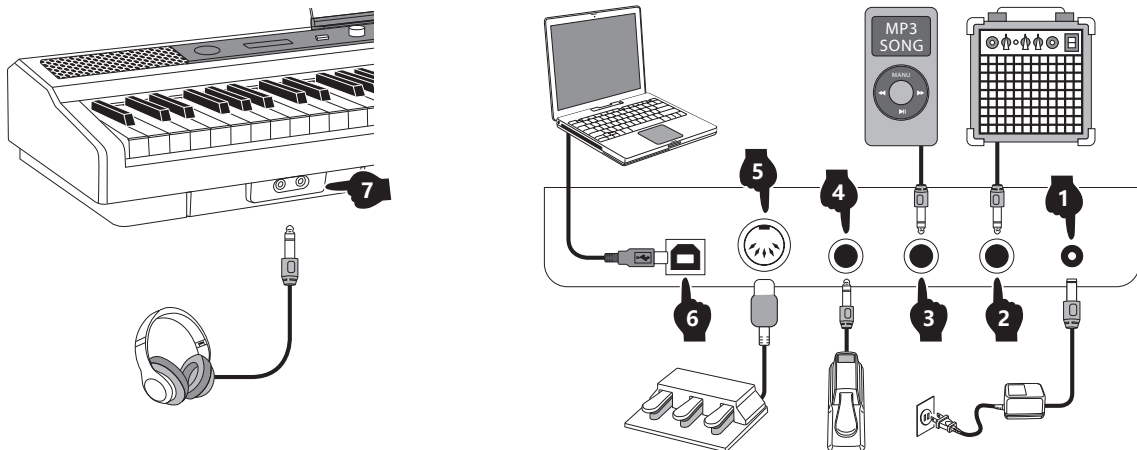
- This product is an electro-acoustic instrument product. It is normal that there is a little current sound in the speaker or earphone after power-on.  
Keep away from "radio, TV, antenna receiver, router, refrigerator, TV, motor and other RF electrical interference sources" during use.



<b>FUNCTION INTRODUCTION</b>	<b>1</b>
<b>CATALOG</b>	<b>2</b>
<b>TERMINAL DIAGRAM</b>	<b>3</b>
POWER TERMINAL CONNECTION	3
AUDIO OUTPUT PORT	3
AUDIO INPUT PORT	3
SUSTAIN PEDAL PORT	3
THREE PEDAL PORT	3
USB MIDI PORT	3
DUAL HEADPHONE PORTS	3
<b>OPERATION GUIDE OF BUTTON VERSION</b>	<b>4</b>
POWER ON/OFF	4
MASTER VOLUME	4
DEMONSTRATION MUSIC PLAYING	4
INSTRUMENT TIMBRE	4
ACCOMPANIMENT	5
METRONOME	6
KEYBOARD DRUM	6
KEYBOARD TRANS	6
SOUND EFFECT	6
KEYBOARD TOUCH	6
RECORDING	6
SAVE SETTINGS	7
BLUETOOTH AUDIO CONNECTION	7
BLUETOOTH MIDI SOFTWARE CONNECTION	7
<b>APPENDIX</b>	<b>8</b>
TIMBRE TABLE	8
RHYTHM TABLE	8
DEMO TABLE	8
<b>PRODUCT MAINTENANCE</b>	<b>9</b>
<b>SAFETY PRECAUTIONS</b>	<b>10</b>
<b>WARRANTY CARD</b>	<b>13</b>



## TERMINAL DIAGRAM



### 1 POWER TERMINAL CONNECTION

Connect the power cord as shown in the figure, one end is inserted into the DC socket, and the other end is inserted into the 100-240V household power socket. (Fig. 1)

### 2 AUDIO OUTPUT PORT

The audio output port can be connected with external active speaker and power amplifier equipment. (Fig. 2)

### 3 AUDIO INPUT PORT

The audio input port can be connected to external audio source (such as MP3, mobile phone and other linear audio signal input) for play. (Fig. 3)

### 4 SUSTAIN PEDAL PORT

Connect the sustain pedal, and hold the pedal to control the effect of sound extension. (Fig. 4)

### 5 THREE PEDAL PORT

Connect the three pedals, and the sound control sequence of pressing the three pedals is: weak tone / delayed tone / sustained tone. (Fig. 5)

### 6 USB MIDI PORT

Using the USB MIDI port, you can interact with the music device with midi. Through the pre installed Music software on the computer, tablet and mobile phone, you can learn or play the keyboard, perform, compose, store and other functions. (Fig. 6)

### 7 DUAL HEADPHONE PORTS

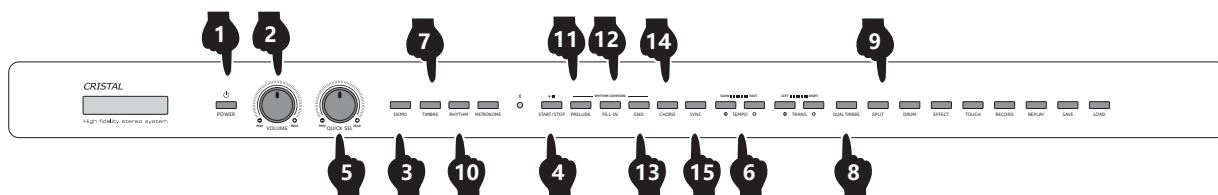
Connect the earphone to monitor the sound details, and automatically cut off the built-in speaker, so that no one will be disturbed when playing the piano. (Fig. 7)

## REMARK!

- to prevent failure and damage to the device, please make sure that all devices are turned off and turn down the volume before inserting any port.
- Speakers, earphones and external audio equipment are accessories purchased separately, not standard!



# OPERATION GUIDE OF BUTTON VERSION



## 1 POWER ON/OFF

Press the "POWER" button, the indicator lights up, enters the open state, and press again to close. (Fig. 1)

- Processor chips of this product are complex, similar to computer systems. Sometimes they can not respond. Please turn off the power switch and then turn it on to work properly.

## 2 MASTER VOLUME

Turn the "VOLUME" knob to adjust the total volume to a satisfactory position. (Fig. 2)

## 3 DEMONSTRATION MUSIC PLAYING

1. Press the "DEMO" button to enter the music playing mode. (Fig. 3)
  2. Press the "START / STOP" button to start or stop the music playing. (Fig. 4)
  3. Turning the "Quick Select" knob to select the music to be played, and the screen will display the code and name of the selected music. (Fig. 5)
  4. Press "TEMPO + -" button to change the playing speed of music. (Fig. 6)
- There are 60 songs in total. Please refer to the attached demo table for the name of the songs.

## 4 INSTRUMENT TIMBRE

### SELECT INSTRUMENT TIMBRE:

1. Press the "TIMBRE" button to enter the instrument timbre selection mode. (Fig. 7)
  2. Turning the "Quick Select" knob to select the timbre of the instrument, and the selected timbre code and name will be displayed on the screen. (Fig. 5)
- there are 129 timbres in total. Please refer to the appendix tone table for the timbre name of the musical instrument.

### SET DUAL TIMBRE:

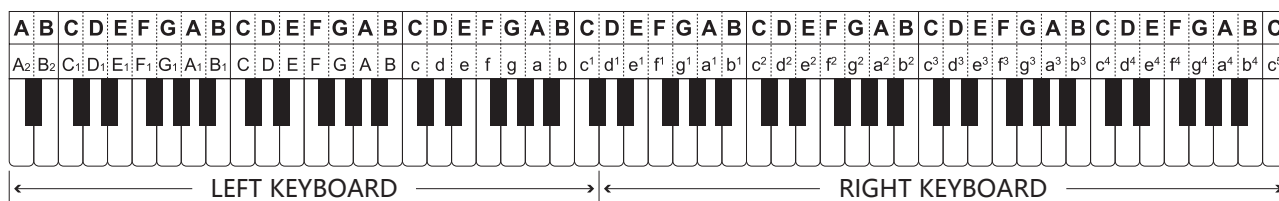
1. In tone mode, first select a tone as the main instrument.
2. Press the "DUAL TIMBRE" button to start the dual tone mixing mode. (Fig. 8)
3. Turning the "Quick Select" knob to select another instrument as the superimposed timbre. (Fig. 5)
4. Playing on the "KEYBOARD" can produce a mixed sound of two musical instruments.
5. Press the "DUAL TIMBRE" button again to exit the function.

### SET KEYBOARD SPLIT:

1. In tone mode, first select one as the right keyboard instrument timbre.
2. Press the "SPLIT" button to enter the left and right keyboard instrument timbre segmentation mode. (Fig. 9)
3. Turning the "Quick Select" knob to select another instrument as the timbre of the instrument on the left keyboard. (Fig. 5)
4. Play on the "KEYBOARD". At this time, the left and right sides of the keyboard emit different instrument sounds.
5. Press the "SPLIT" button again to exit the function.



# OPERATION GUIDE OF BUTTON VERSION



## 5 ACCOMPANIMENT

### SELECT RHYTHM:

1. Press the "RHYTHM" button to enter the rhythm selection mode. (Fig. 10)
  2. Turning the "Quick Select" knob to select the rhythm style, and the selected rhythm code and name will be displayed on the screen. (Fig. 5)
  3. Press the "START / STOP" button to start playing the selected rhythm. Press again to stop playing. (Fig. 4)
- there are 127 rhythms in total. Please refer to the rhythm table in the appendix for the rhythm name.

### PRELUDE:

1. First select the rhythm to be played, and then press the "PRELUDE" button to enter the standby mode. (Fig. 11)
2. Press the "START / STOP" button to start playing the prelude of the selected rhythm, and then play the selected rhythm. (Fig. 4)

### INSERT INTERLUDE:

In the process of rhythm playing, press the "FILL-IN" button to insert a transitional interlude for the rhythm being played. (Fig. 12)

### EPILOGUE:

During rhythm playback, press the "END" button to insert an endplay for the rhythm being played. After the endplay is finished, the rhythm playback will stop. (Fig. 13)

### CHORDS:

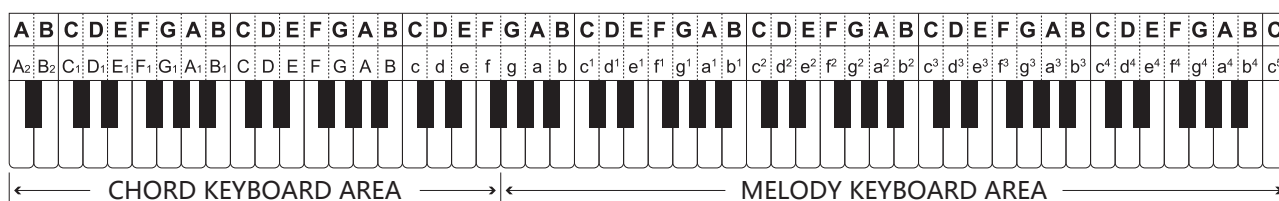
Press the "CHORD" button, the left keyboard will switch to the chord keyboard area (1-34 keys from the left). At this time, play the left keyboard, and automatically recognize and play the chord according to the single finger or multi finger fingering method. Press again to exit this function. (Fig. 14)

### SYNCHRONOUS START:

1. First select the rhythm to be played, and then press the "SYNC" button to enter the rhythm synchronization playing state. (Fig. 15)
  2. Press the piano key in the "CHORD KEYBOARD AREA" to trigger the rhythm to play synchronously.
- if "CHORD" is on, the chord and the selected rhythm will be played synchronously.

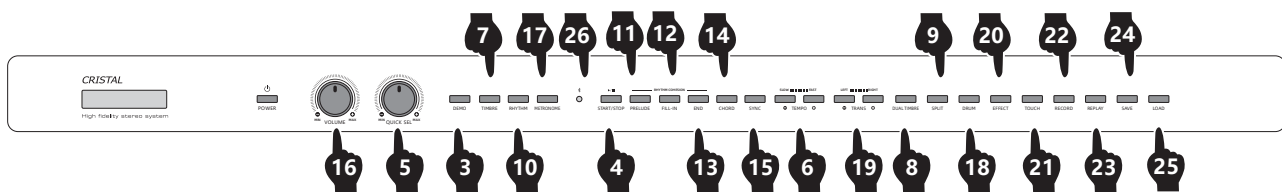
### RHYTHM PLAYBACK SPEED:

Press the "TEPMO + -" button to change the rhythm playing speed. (Fig. 6)





# OPERATION GUIDE OF BUTTON VERSION



## 6 METRONOME

1. Press the "metronome" button, the metronome function starts, and you can play the piano with the beat sound. (Fig. 17)
2. There are 4 types of metro, which can be switched by pressing the "Metro" button repeatedly.
  - switching sequence: 1 / 4, 2 / 4, 3 / 4, 4 / 4, close, and cycle accordingly.
3. Press the "tempo + -" button to change the beat speed. (Fig. 6)

## 7 KEYBOARD DRUM

Press the "DRUM" button to switch the scale keyboard to the percussion keyboard, and then press it again to turn off the function. (Fig. 18)

## 8 KEYBOARD TRANS

Press the "TRANS + -" button to adjust the keyboard pitch. This function allows you to adjust the range of the whole keyboard in half a scale without changing the keyboard position. (Fig. 19)

- adjustment range: 12 semitones.

## 9 SOUND EFFECT

Press the "EFFECT" button to turn on reverberation. At this time, the sound of playing the piano has the sound wave reflection effect in the building. Press again to turn off this function. (Fig. 20)

## 10 KEYBOARD TOUCH

The touch of the keyboard is on by default. When playing the keyboard, the sound with corresponding volume will be sent out according to the strength of fingers, which is convenient for playing music with different feelings. Press the "TOUCH" button to turn off the function. After turning off, the sound of playing the piano is the maximum value. Press it again to turn it on again. (Fig. 21)

## 11 RECORDING

1. Press the "RECORD" button to enter the recording mode. (Fig. 22)
2. Play the piano for recording.
3. Press the "REPLAY" button to play the recorded music. (Fig. 23)
  - during recording, the timbre of the instrument can be changed for recording.



## OPERATION GUIDE OF BUTTON VERSION

### 12 SAVE SETTINGS

1. Press the "SAVE" button to save the modified parameter setting, which is convenient for calling user-defined parameters. (Fig. 24)
  - parameters that can be saved: TIMBRE / RHYTHM / DEMO / TEMPO / TRANS / EFFECT.
2. Press the "LOAD" button to load the previously modified parameter settings. (Fig. 25)

### 13 BLUETOOTH AUDIO CONNECTION

Turn on the mobile phone settings, turn on Bluetooth, find the new device "BT Audio" and connect the Bluetooth audio. After the connection is successful, the Bluetooth light on the smart piano panel lights up, the smart piano becomes a Bluetooth speaker, and the songs or other audio sounds played by the mobile phone will be sent out through the smart piano. (Fig. 26)

### 14 BLUETOOTH MIDI SOFTWARE CONNECTION

Pre install MIDI music software on computers, tablets, mobile phones and other smart devices with Bluetooth transmission, and then pair and connect with Bluetooth through music software. After successful connection, you can operate functions such as learning or composition according to the functions of their music software.





# APPENDIX

## TIMBRE TABLE

### PIANO

- 000 Acoustic Grand Piano
- 001 Bright Acoustic Piano
- 002 Electric Grand Piano
- 003 Honky-tonk Piano
- 004 Rhodes Piano
- 005 Chorused Piano
- 006 Harpsichord
- 007 Clavichord

### HAMMERED INSTRUMENT

- 008 Celesta
- 009 Glockenspiel
- 010 Music box
- 011 Vibraphone
- 012 Marimba
- 013 Xylophone
- 014 Tubular Bells
- 015 Dulcimer

### ORGAN

- 016 Hammond Organ
- 017 Percussive Organ
- 018 Rock Organ
- 019 Church Organ
- 020 Reed Organ
- 021 Accordion
- 022 Harmonica
- 023 Tango Accordion

### GUITAR

- 024 Acoustic Guitar (nylon)
- 025 Acoustic Guitar (steel)
- 026 Electric Guitar (jazz)
- 027 Electric Guitar (clean)
- 028 Electric Guitar (muted)
- 029 Overdriven Guitar
- 030 Distortion Guitar
- 031 Guitar Harmonics

### BASS

- 032 Acoustic Bass
- 033 Electric Bass(finger)
- 034 Electric Bass (pick)
- 035 Fretless Bass
- 036 Slap Bass 1
- 037 Slap Bass 2
- 038 Synth Bass 1
- 039 Synth Bass 2

### STRING MUSIC

- 040 Violin
- 041 Viola
- 042 Cello
- 043 Contrabass
- 044 Tremolo Strings
- 045 Pizzicato Strings
- 046 Orchestral Harp
- 047 Timpani

### ENSEMBLE / CHORUS

- 048 String Ensemble 1
- 049 String Ensemble 2
- 050 Synth Strings 1
- 051 Synth Strings 2
- 052 Choir Aahs
- 053 Voice Oohs
- 054 Synth Voice
- 055 Orchestra Hit

### BRASS INSTRUMENTS

- 056 Trumpet
- 057 Trombone
- 058 Tuba
- 059 Muted Trumpet
- 060 French Horn
- 061 Brass Section
- 062 Synth Brass 1
- 063 Synth Brass 2

### REED INSTRUMENT

- 064 Soprano Sax
- 065 Alto Sax
- 066 Tenor Sax
- 067 Baritone Sax
- 068 Oboe
- 069 English Horn
- 070 Bassoon
- 071 Clarinet

### FLUTE

- 072 Piccolo
- 073 Flute
- 074 Recorder
- 075 Pan Flute
- 076 Bottle Blow
- 077 Shakuhachi
- 078 Whistle
- 079 Ocarina

### SYNTH LEAD

- 080 Lead 1 (square)
- 081 Lead 2 (sawtooth)
- 082 Lead 3 (caliope lead)
- 083 Lead 4 (chiff lead)
- 084 Lead 5 (charang)
- 085 Lead 6 (voice)
- 086 Lead 7 (fifths)
- 087 Lead 8 (bass+lead)

### SYNTH TIMBRE

- 088 Pad 1 (new age)
- 089 Pad 2 (warm)
- 090 Pad 3 (polysynth)
- 091 Pad 4 (choir)
- 092 Pad 5 (bowed)
- 093 Pad 6 (metallic)
- 094 Pad 7 (halo)
- 095 Pad 8 (sweep)

### SYNTH EFFECT

- 096 FX 1 (rain)
- 097 FX 2 (soundtrack)
- 098 FX 3 (crystal)
- 099 FX 4 (atmosphere)
- 100 FX 5 (brightness)
- 101 FX 6 (goblins)
- 102 FX 7 (echoes)
- 103 FX 8 (sci-fi)

### FOLK INSTRUMENTS

- 104 Sitar
- 105 Banjo
- 106 Shamisen
- 107 Koto
- 108 Kalimba
- 109 Bagpipe
- 110 Fiddle
- 111 Shanai

### PERCUSSION INSTRUMENT

- 112 Tinkle Bell
- 113 Agogo
- 114 Steel Drums
- 115 Woodblock
- 116 Taiko Drum
- 117 Melodic Tom
- 118 Synth Drum
- 119 Reverse Cymbal

### SOUND EFFECT

- 120 Guitar Fret Noise
- 121 Breath Noise
- 122 Seashore
- 123 Bird Tweet
- 124 Telephone Ring
- 125 Helicopter
- 126 Applause
- 127 Gunshot
- 128 Drum

## RHYTHM TABLE

- 000 80sPop
- 001 16beat1
- 002 8Ballad
- 003 Soul1
- 004 70sRock
- 005 Afro pop
- 006 Samba pop
- 007 60sSoul
- 008 70sSoul
- 009 Funky
- 010 16Beat slide
- 011 Pop dance1
- 012 Pop dance2
- 013 Hard rock
- 014 Fusion jazz
- 015 Funk slide
- 016 Aor
- 017 Love ballad1
- 018 Love ballad2
- 019 Funky soul
- 020 Classic pop
- 021 c&w1
- 022 c&w2
- 023 Bossa nova1
- 024 Rock roll
- 025 Rock cha-cha
- 026 Baiao
- 027 Pop dance3
- 028 Bachata
- 029 Bossa nova2
- 030 Polka1
- 031 Blues1
- 032 80sSoul
- 033 90sSoul
- 034 Popular waltz
- 035 American march
- 036 Tango
- 037 Tarante
- 038 Funk pop
- 039 Rock waltz
- 040 Mideast
- 041 Jazz waltz1
- 042 Jazz waltz2
- 043 16Beat tune
- 044 Polka2
- 045 Waltz
- 046 African
- 047 Swing1
- 048 Vallenato
- 049 Bequine
- 050 Samba1
- 051 Samba2
- 052 Tango1
- 053 Tango2
- 054 House1
- 055 Jazz waltz
- 056 Bolero
- 057 New soul
- 058 Bossa nova3
- 059 Shuffle1
- 060 Shuffle2
- 061 House2
- 062 Merengue1
- 063 Salsa
- 064 Latin swing
- 065 Thailand
- 066 Reggae1
- 067 Soul2
- 068 Soul3
- 069 Merengue2
- 070 Polka3
- 071 16Reggae
- 072 Slow rock1
- 073 Slow rock2
- 074 Slow soul3
- 075 Jorpo
- 076 Lambada
- 077 Love ballad3
- 078 Plena
- 079 China1

- 080 Acid
- 081 8Beat modern
- 082 Country folk
- 083 Soul4
- 084 City pop
- 085 Calypso
- 086 Love ballad4
- 087 Love ballad5
- 088 Soul5
- 089 Bluegrass
- 090 16beat2
- 091 China2
- 092 Soul6
- 093 Kinetic1
- 094 Kinetic2
- 095 Funk disco
- 096 Cobmo disco
- 097 Twist
- 098 Euro beat
- 099 Rhumba1
- 100 Euro soul
- 101 Rhumba2
- 102 Rhumba3
- 103 Jazz Samba
- 104 Rhumba4
- 105 Funk Samba
- 106 Rhumba5
- 107 Samba3
- 108 Hard beat
- 109 Mambo1
- 110 Disco soul
- 111 Mambo2
- 112 Cobmo
- 113 Swing beat
- 114 China3
- 115 Band marche1
- 116 Band marche2
- 117 Band marche3
- 118 Big band1
- 119 Big band2
- 120 Soul7
- 121 Soul8
- 122 Swing2
- 123 Swing3
- 124 Swing4
- 125 Habanera
- 126 Bachata1

## DEMO TABLE

- 00 Concerto D'Amour
- 01 Dream of Love
- 02 Minuet From L'Arlesienne
- 03 The River of Babylon
- 04 BachSong
- 05 Beethoven Piano Sonatas
- 06 Cancan
- 07 Come Back To Sorrento
- 08 Clarinet Polka
- 09 cuckoo waltz
- 10 Russian dance music
- 11 Merry widow waltz
- 12 Minuet in G
- 13 Dove
- 14 OldFranc
- 15 Haydn serenade
- 16 Ode to Joy
- 17 Dance of the Flowers
- 18 Innocent
- 19 Parade March
- 20 Gewolt
- 21 March Militaire
- 22 Triumphal March
- 23 Carmen aragon
- 24 Carman Overture
- 25 canon
- 26 Katyusha
- 27 Lovely Smurf
- 28 Clementine sonata
- 29 Croatian Rhapsody
- 30 The Blue Danube Waltz
- 31 LettGo
- 32 Mary had a little lamb
- 33 American patro
- 34 MARIAGE D' AMOUR
- 35 The Magic Flute-overture
- 36 Mozart
- 37 Mozart symphony.
- 38 The Fountain
- 39 A Comme Amour
- 40 Unchained Melody
- 41 santa lucia
- 42 Troika
- 43 The Maiden's Prayer
- 44 Santa Claus is Coming to Town
- 45 Schubert Serenade
- 46 Ballade pour Adeline
- 47 Four Seasons Spring March
- 48 Swan Lake
- 49 Susannah
- 50 Turkish March
- 51 Smile polka
- 52 my heart will go on
- 53 Pour Elise
- 54 Chopin Nocturnes
- 55 MINUTE WALTZ
- 56 Spain Matador March
- 57 Hungarian Dance
- 58 Edelweiss
- 59 Flight of the Bumble Bee



## PRODUCT MAINTENANCE

Careful maintenance and protection of this product plays an important role in prolonging the service life of the product and reducing the failure.

### **1 AVOID HEATING, DAMPNESS OR DIRECT SUNLIGHT**

Do not over expose the product to direct sunlight, or place it near air conditioning or extremely hot place.

### **2 DO NOT USE NEAR THE TV OR RADIO**

This product may cause video or audio interference to the reception of TV and radio. If this happens, the product should be removed from the TV or radio.

### **3 NO DILUENTS OR SIMILAR CHEMICALS SHOULD BE USED FOR CLEANING**

Clean the product with a soft cloth wetted with weak water solution and neutral detergent. Soak the cloth in a solution and wring it dry until it approaches drying.

### **4 DO NOT SHAKE, AVOID COLLISION**

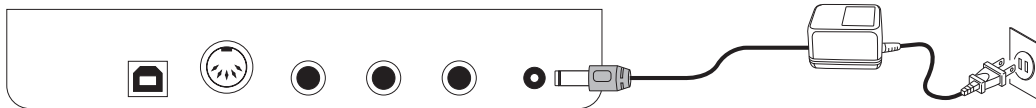
When moving, the product should be handled carefully and lightly. Violent vibration and collision are strictly prohibited in order to avoid damage to the shell or internal electronic components.



## SAFETY PRECAUTIONS

### POWER SUPPLY

This product can be powered by standard indoor wall socket. Please only use the power cord equipped with this product. Be sure to turn off the power when not in use temporarily. When not in use for a long time, please unplug the power cord and keep it properly.



### SIGN

To ensure that you use this product safely and correctly, to prevent harm to users and others and financial damage, this manual and products are marked with a series of safety signs. The various signs and their meanings are as follows:

#### **WARNING**

This sign indicates that there is a potential risk of death or serious injury if this mark is ignored and the product is mishandled.

#### **BE CAREFUL**

This sign indicates that there is a potential danger of injury to personnel or other financial damage if this sign is ignored and the product is operated incorrectly.

### EXAMPLE OF LOGO



This triangle sign ( $\triangle$ ) indicates what users should pay attention to. (The left example is careful shocks)



A circular sign ( $\odot$ ) with an oblique line indicates prohibitions. The icons in or beside the logo indicate the contents specifically prohibited. (The example on the left is no disassembly)



The round black bottom sign ( $\ominus$ ) indicates what must be observed. The diagrams in this sign indicate the contents of the specific matters that must be observed. (The example on the left is that the power plug must be pulled out of the socket)



# SAFETY PRECAUTIONS

## ⚠️ WARNING

### Smoke, odor, overheating

When the product smokes, smells or overheats, there is a danger of fire and electric shock when it is used continually. In case of the above situation, the following operations should be performed immediately:

1. Turn off the power supply.
2. Pull the plug out of the power outlet.
3. Contact your dealer.

### Power cord

1. The improper use of power cord may cause fire and electric shock. The following precautions must be observed:

- The special power cord designated for this product must be used.
- The AC power supply with output voltage within the rated voltage range for household use must be used.
- Do not overload power sockets and extension lines.



2. The improper treatment of power line will lead to its damage or breakage, which will cause fire and electric shock hazards. The following precautions must be observed:

- Do not place or heat heavy objects on power lines.
- Do not attempt to alter or bend the power cord too much.
- Do not twist or pull the power cord.
- If the power cord or plug is damaged, please replace the same type of power cord.



3. Do not touch the power cord and plug with wet hands, otherwise there is a danger of electric shock.



4. Please use the power cord where the water will not splash. Water is in danger of causing fire and electric shock.



5. Never place vases or any other container containing water on this product. Water is dangerous of causing fire and electric shock.



6. Do not allow minors to unplug and touch power lines or connection boards. Minors have no common sense of electricity safety, which may cause electric shock.



## ⚠️ BE CAREFUL

The improper use of power cord may cause fire and electric shock. The following precautions must be observed:

- Never put the power cord near the oven or other heat source.
- Do not pull the cable when pulling out of the power socket. The main body of the plug must be grasped.
- The power cord plug must be inserted in the socket to the end.
- Make sure the power supply is off before connecting or disconnecting it.
- When thunderstorms occur or before traveling or other long-term departure, disconnect the power cord from the wall outlet.
- At least once a year, remove the power cord from the wall outlet and clean the dust accumulated around the plug.



### Do not burn this product

Do not put this product in the fire, otherwise it will lead to product combustion and explosion of internal electronic components, which will cause fire and personnel injury.



### Water and foreign bodies

Water, other liquids and (metal sheets, etc.) entering this product are in danger of causing fire and electric shock. In case of the above situation, the following operations shall be performed immediately:



1. Turn off the power supply.
2. If you are using a power cord for power supply, unplug it from the wall outlet.
3. Contact your distributor.

### Disassembly and transformation

Do not disassemble or transform the product in any way, otherwise there is a risk of electric shock, scald or other personal injury. All internal inspection, adjustment and maintenance operations should be entrusted to your distributor.





## SAFETY PRECAUTIONS

### Falling or colliding

If the product falls or is damaged by strong impact, it will be in danger of causing fire and electric shock. In case of the above situation, the following operations shall be performed immediately:



1. Turn off the power supply.
2. If you are using a power cord for power supply, you need to unplug it from the wall outlet.
3. Contact your distributor.

### Plastic bag

Do not let anyone put plastic bags for this product on his head or in his mouth. Otherwise, there is a risk of asphyxia. Families with young children should pay special attention to it.



### Keep a distance from the product and the bracket

Climbing the bracket is dangerous of overturning or damage. Families with young children should pay special attention to it.



### Put

Avoid placing the product on an uneven surface or any other unstable place. Otherwise, it will cause the product to fall down, which will lead to the risk of injury.



### Product Mobility

Before moving this product, you must unplug the power cord plug from the wall outlet and pull out all other cables and connecting wires. Otherwise, it will lead to damage of power or connection wires, resulting in fire and electric shock.



### clean

Before cleaning this product, you must unplug the power cord plug from the wall outlet, otherwise there is a risk of fire and electric shock.



### Jack

The socket of this product can only be connected to the designated equipment and devices. Connecting non-designated equipment or devices is dangerous of causing fire and electric shock.



### Location selection

It should be avoided to place the product in the following places, otherwise there is a risk of fire and electric shock.



- High temperature or dusty places.
- Kitchen or other places with lampblack.
- Where the product is exposed to direct sunlight, or any other place where the product will produce high temperature.

### Volume

Don't play music long and loud. Pay special attention when using headphones. Excessive volume can damage your hearing.



### Heavy

Do not place heavy objects on this product. Otherwise, the top of the product will be overweight, causing the product to overturn or drop objects on it, which will lead to the risk of injury.



### Correct assembly of scaffolds

The incorrect assembly of the bracket may overturn, causing the product to fall off and posing a risk of injury to personnel. Therefore, it must be assembled according to the instructions in the attached installation guide to ensure that the product is properly mounted on its bracket.





## WARRANTY CARD

### Warranty rules

1. Faults arising from normal use of this product can be guaranteed free of charge for \_\_\_\_\_ days from the date of purchase.
2. Failure occurs during the warranty period. This warranty card and shopping ticket must be presented during maintenance.
3. In the following cases, no free warranty will be provided:
  - Damage caused by improper use by users.
  - Fault damage caused by irresistible factors such as fire, flood, earthquake and lightning strike.
  - Failure caused by unauthorized self-disassembly.
4. After exceeding the warranty period, the company is responsible for maintenance, but it needs to charge a cost fee.

**Seller:** \_\_\_\_\_

**Address:** \_\_\_\_\_

**Telephone:** \_\_\_\_\_

### Maintenance record

Date	Maintenance record	Repairman





